



Welcome New Panthers!

History of Nease

- ▶ Opened in 1981
- ▶ Tradition of Excellence!
- ▶ Academies
- ▶ Attendance Zone
- ▶ Enrollment

Courses for next year

- ▶ All academic courses and petitions to change a course will be reviewed once FSA and EOC scores are received from the State. Should be early June.
- ▶ We will send a text message telling parents to check courses in HAC when we are done with changes.
- ▶ The last day to request a change to a core course is Monday, July 1st.

Panther Pick-up

- ▶ Saturday, August 3rd
 - ▶ Last names A-L from 8am to 10am
 - ▶ Last names M-Z from 10am to noon
 - ▶ Pick-up schedule and textbooks
 - ▶ Purchase locker (\$5) and gym uniforms (\$20)
 - ▶ Walk campus to find classrooms
 - ▶ Join PTSO and/or IB Boosters

Link Crew Orientation

- ▶ Last names A-L
 - ▶ Monday, August 5th from 5:30pm to 8:30pm in the gym
- ▶ Last names M-Z
 - ▶ Tuesday, August 6th from 5:30pm to 8:30pm in the gym

Summer Assignments

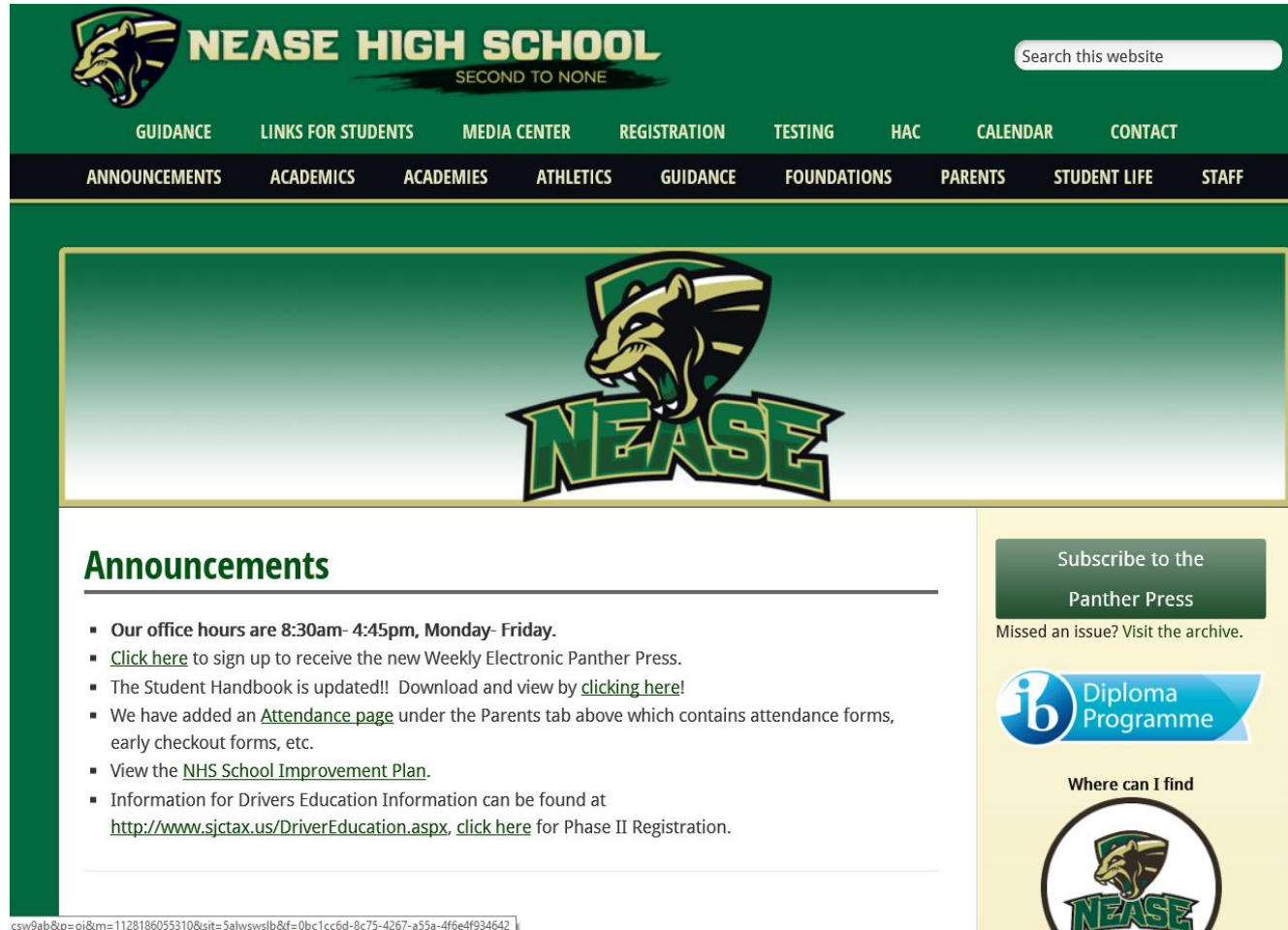
Assignments will be posted on the website, so please check after school is out.

AP World History

Spanish 2 Pre-IB

ALL students are encouraged to read age appropriate books over the summer.

Panther Press



The screenshot shows the Nease High School website with a green header. The logo on the left features a panther head and the text "NEASE HIGH SCHOOL SECOND TO NONE". A search bar is on the right. Below the header is a navigation menu with links: GUIDANCE, LINKS FOR STUDENTS, MEDIA CENTER, REGISTRATION, TESTING, HAC, CALENDAR, CONTACT, ANNOUNCEMENTS, ACADEMICS, ACADEMIES, ATHLETICS, GUIDANCE, FOUNDATIONS, PARENTS, STUDENT LIFE, and STAFF. The main content area has a large banner with the Nease panther logo and the word "NEASE" in a stylized font. Below the banner is a section titled "Announcements" with a list of updates. To the right of the announcements is a "Subscribe to the Panther Press" button and a link to the archive. Below that is a blue "ib Diploma Programme" button and a "Where can I find" section with a circular logo.

NEASE HIGH SCHOOL
SECOND TO NONE

Search this website

GUIDANCE LINKS FOR STUDENTS MEDIA CENTER REGISTRATION TESTING HAC CALENDAR CONTACT

ANNOUNCEMENTS ACADEMICS ACADEMIES ATHLETICS GUIDANCE FOUNDATIONS PARENTS STUDENT LIFE STAFF

Announcements


- **Our office hours are 8:30am- 4:45pm, Monday- Friday.**
- [Click here](#) to sign up to receive the new Weekly Electronic Panther Press.
- The Student Handbook is updated!! Download and view by [clicking here!](#)
- We have added an [Attendance page](#) under the Parents tab above which contains attendance forms, early checkout forms, etc.
- View the [NHS School Improvement Plan](#).
- Information for Drivers Education Information can be found at <http://www.sjctax.us/DriverEducation.aspx>, [click here](#) for Phase II Registration.

Subscribe to the
Panther Press

Missed an issue? Visit the archive.

ib Diploma Programme

Where can I find



What should parents do with a high school student?

- ▶ Encourage good study habits - spending time nightly in a quiet place
- ▶ Encourage students to get plenty of sleep
- ▶ Encourage students to seek help when needed
- ▶ Continue to monitor grades
- ▶ Continue to monitor social media
- ▶ Continue to stay informed regarding friends and whereabouts

Dress Code

Expectation: Students will take pride in their appearance and dress appropriately for school EVERY day.

Students may not wear...

- ▶ No blankets
- ▶ Shirts/dresses that are low cut revealing cleavage.
- ▶ Tube top or tube top w/arm cuffs. (Bralette under the tube top does not meet dress code. Shirt or dresses pulled off the shoulder are allowed, along with anything with a strap.)
- ▶ Shirts short enough to expose midriff.
- ▶ Shorts/dresses/skirts shorter than 4" above top of knee.
- ▶ Jeans with holes 4" above top of knee.
- ▶ Leggings with sheer panels or cut-outs 4" above the top of knee.
- ▶ Leggings that are sheer with shorts/dresses that are shorter than 4" above the top of knee. If leggings are worn with shorts/dresses shorter than 4", leggings must be opaque - not see through.
- ▶ Sagging pants. All pants must be worn around the waist.
- ▶ Tank tops that have a large arm opening exposing chest, side or midriff.
- ▶ Clothing advertising alcohol, drugs, etc.
- ▶ Hats, hoodies or bandanas inside any building.
- ▶ ***Two earbuds - one ONLY while outside and in cafeteria. NO earbuds in classrooms, gym, locker room or auditorium.***



YES!

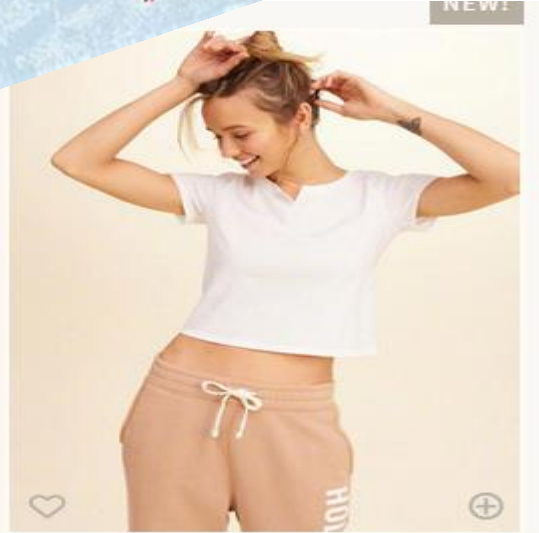


Download from Dreamstime.com



YES!





Dress Code Consequences

Students who break the dress code will be provided a Nease t-shirt or shorts to wear, so they may attend class. T-shirt or shorts must be returned to receive personal clothing item(s) back. **Earbuds will be taken and given back at the end of the day.**

- ▶ 1st offense - warning
- ▶ 2nd offense - lunch detention
- ▶ 3rd offense - 3 lunch detentions
- ▶ 4th offense - 1 day of ISS (in-school suspension)
- ▶ 5th offense - 2 days of ISS or Saturday School
- ▶ 6th offense plus - OSS (out-of-school suspension)

Dress Code violations will be erased after 1st semester, so everyone starts over 2nd semester.

Cell phones

Cell phones can NOT be used in classrooms, which includes gym and locker room.

Please put them away BEFORE entering. Teacher will confiscate and give phone to the dean's office.

- ▶ 1st offense - warning
- ▶ 2nd offense - warning
- ▶ 3rd offense - official warning with dean
- ▶ 4th & 5th offense - In-school suspension
- ▶ 6th or more offense - out-of-school suspension

Phone violations will be erased after 1st semester, so everyone starts over 2nd semester.



Vaping

▶ Level III Contraband

- ▶ Use, possession and or distribution results in 3 days of out-of-school suspension.
- ▶ NOT on school property at all.
- ▶ Continued violations of a level III offense result in it being regarded as repeated misconduct and could result in Level IV referral to Gaines

Bus Behavior

- ▶ Follow the driver's expectations
- ▶ Listen to the driver and follow directions
- ▶ No vaping
- ▶ Do NOT throw anything on the bus or out of the window
- ▶ Stay in your seat
- ▶ Be respectful

Bus referrals will result in suspension from the bus!!